

# ANALOG AND DIGITAL CHANNEL MULTIPLEXER

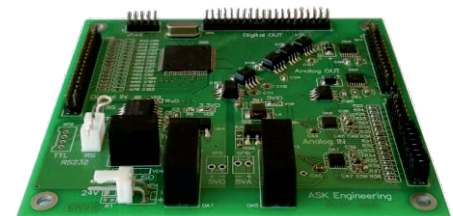
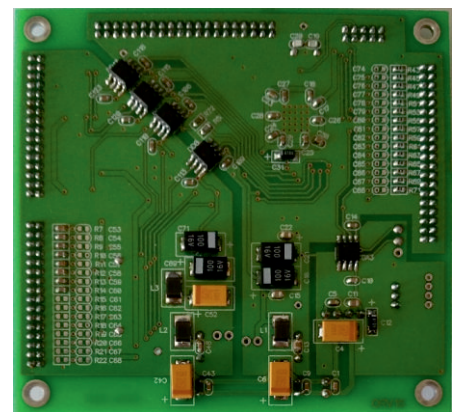
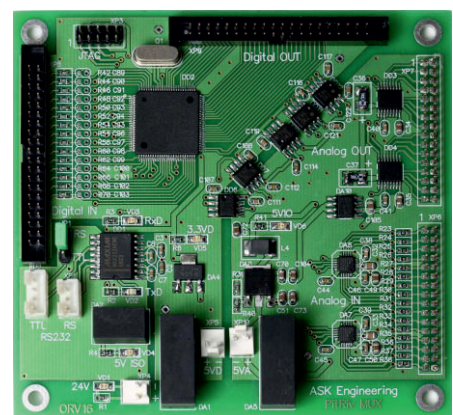


Can be used within ROV, UUV & UAV control systems  
Applicable in systems of data collection and logging

30 digital and 16 analog channels  
Galvanic isolation of digital and analog channels

Operable in various configurations: multiplexer - computer, multiplexer - multiplexer  
and multiplexer - computer - multiplexer

Power supply	240 mA @ 24 VDC $\pm$ 10%
Refresh rate	20 Hz (on any port)
Interface	RS-232, 38400 bits/sec TTL (optionally)
<b>Digital channels</b>	
Number of inputs (TTL)	30
Number of outputs (TTL)	30
Input voltage range	Logical zero: 0 $\div$ 0.8 V Logical one: 1.8 $\div$ 3.3 V
Input current	1 mA @ 3.3 V, -5 mA @ 0 V
Output voltage range	Logical zero: 0 $\div$ 0.15 V Logical one: < 3.3 V
Output current	Logical zero: 10 mA @ 0.55 V Logical one: 10 mA @ 3.3 V
<b>Analog channels</b>	
ADC bit capacity	16 bits
Number of inputs (0-5 V)	16
Number of outputs (0-5 V)	16
Input resistance	5 GOhm
Output current	< 2.5 mA per channel
Relative accuracy	$\pm$ 8 LSB
Nonlinearity	$\pm$ 1.5 LSB, monotonous
<b>Physical specifications</b>	
Dimensions (W x L x H)	Format PC/104 - 90 x 96 x 12 mm
Working temperature	-45 $\div$ +75 $^{\circ}$ C
Mounting	4 screws M3



Ask Subsea Ltd.  
Malta, Gzira  
114, The Strand, GZR1027

E-mail: [ash@asksubsea.com](mailto:ash@asksubsea.com)  
Web: [www.asksubsea.com](http://www.asksubsea.com)