

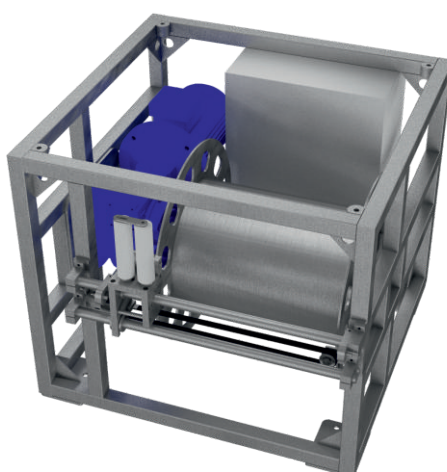


# MARINE WINCH WG-350

Designed for towing marine geophysical equipment (side-scan sonar, magnetometer etc.)

Smooth adjustment of lifting speed

Equipped with an automatic cable level winder with adjustable cable diameter



Power supply	380 V AC, 3-phase
Engine capacity	4 kW
Operating mode	Continuous
Drum rate of rotation	46.7 rpm
Drum capacity	330 m @ $\varnothing$ 12 mm 560 m @ $\varnothing$ 9.3 mm 1550 m @ $\varnothing$ 5 mm
Speed adjustment	0 - 100% (by controller)
Middle layer lifting speed	1 m/s
Inner layer maximum load	350 kg
Cable diameter	5 ÷ 12 mm
Length	860 mm
Width	980 mm
Height	740 mm
Weight	150 kg
Protection level	IP 67



Ask Subsea Ltd.  
Malta, Gzira  
114, The Strand, GZR1027

E-mail: [ash@asksubsea.com](mailto:ash@asksubsea.com)  
Web: [www.asksubsea.com](http://www.asksubsea.com)